

LEGEND

FEATURES

- POTENTIAL DAM SITES
- STUDY AREA
- PL 445
- PL 209
- ROADS AND TRACKS

WATERCOURSES

STREAM ORDERS

- 1
- 2
- 3
- 4
- 5

ENVIRO CONSTRAINTS

ESAs

- Cat B ESA
- Cat B ESA 300m Buffer
- Cat C ESA
- Cat C ESA 200m Buffer
- Cat C ESA Habitat
- Constraints Protocol (outside Cat B/Cat C ESA & Buffer)

FLOODING 100y

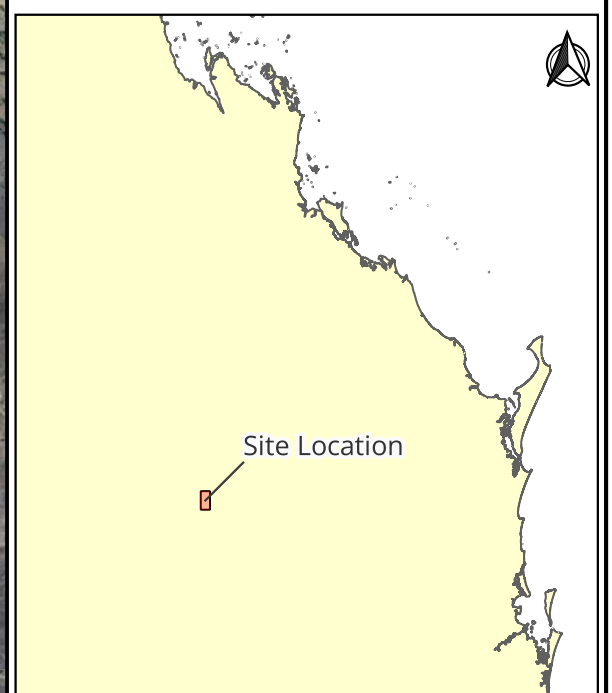
MAX DEPTH

- 8
- 0

SLOPE %

- <= 7
- > 7

Reference Map



1:7,800,000

GDA2020 / MGA zone 55

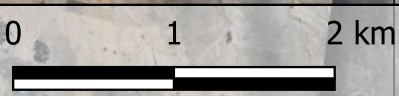
PAGE SIZE A3

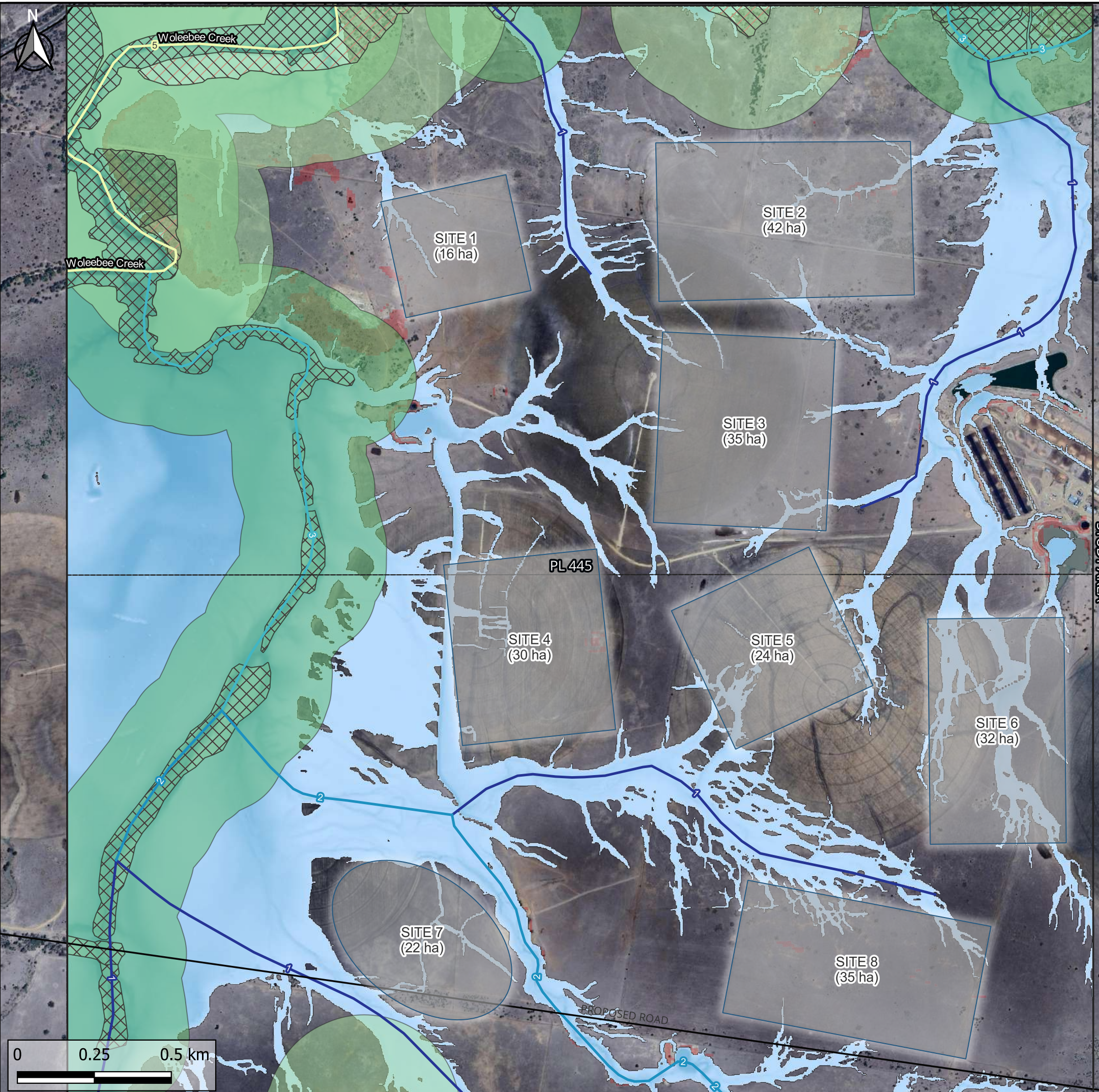


PROJECT LOUISIANA DAM SITING
 FIGURE QC1051_006-SKE-000
 PROJECT NO. QC1051_006
 DATE 14-03-2024
 AUTHOR aleotta

© Engeny Australia Pty Ltd 2024. All Rights Reserved

Disclaimer: While all reasonable care has been taken to ensure the information contained on this map is up to date and accurate, this map contains data from a number of sources - no warranty is given that the information contained on this is free from error or omission. Any reliance placed on such information shall be at the sole risk of the user. Please verify the accuracy of all information prior to using it. This map is not a design document.





LEGEND

FEATURES

- POTENTIAL DAM SITES
- STUDY AREA
- PL 445
- PL 209
- ROADS AND TRACKS

WATERCOURSES

STREAM ORDERS

- 1
- 2
- 3
- 5

ENVIRO CONSTRAINTS

ESAs

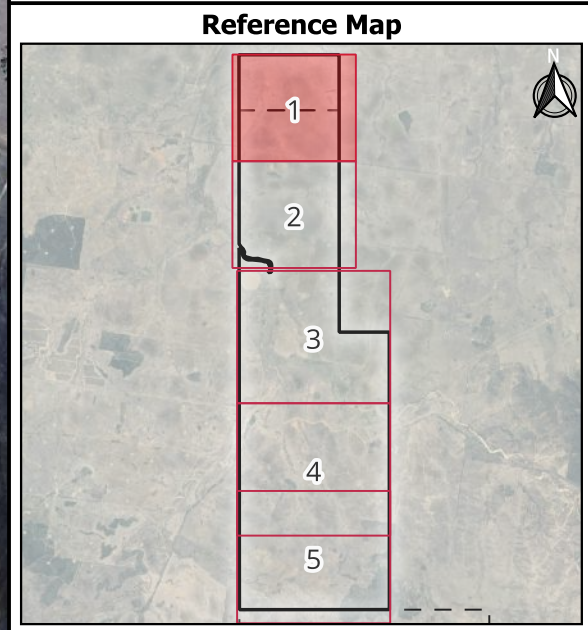
- Cat B ESA
- Cat B ESA 300m Buffer
- Cat C ESA
- Cat C ESA 200m Buffer
- Cat C ESA Habitat
- Constraints Protocol (outside Cat B/Cat C ESA & Buffer)

FLOODING 100y MAX DEPTH

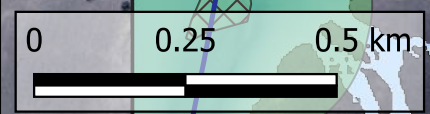
- 8
- 0

SLOPE %

- <= 7
- > 7



1:250,000
GDA2020 / MGA zone 55



PAGE SIZE A3

ENGEMY
© Engeny Australia Pty Ltd 2024. All Rights Reserved

PROJECT LOUISIANA DAM SITING
FIGURE QC1051_006-SKE-001
PROJECT NO. QC1051_006
DATE 14-03-2024
AUTHOR aleotta

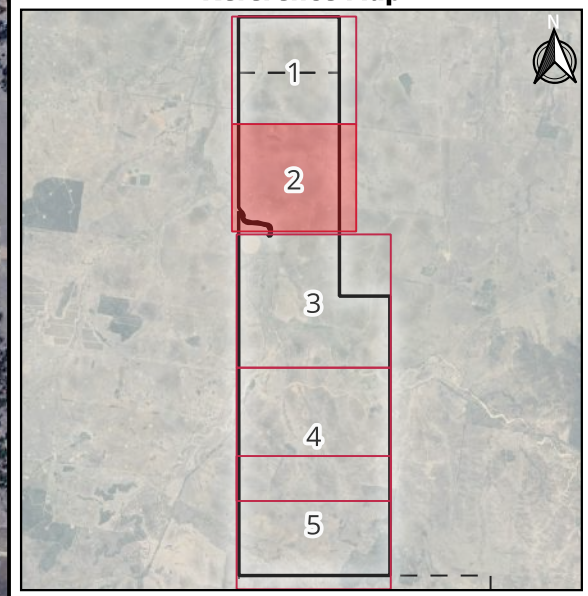
Disclaimer: While all reasonable care has been taken to ensure the information contained on this map is up to date and accurate, this map contains data from a number of sources - no warranty is given that the information contained on this is free from error or omission. Any reliance placed on such information shall be at the sole risk of the user. Please verify the accuracy of all information prior to using it. This map is not a design document.



LEGEND

- FEATURES**
- POTENTIAL DAM SITES
 - STUDY AREA
 - PL 209
 - ROADS AND TRACKS
- WATERCOURSES**
- STREAM ORDERS**
- 1
 - 2
 - 5
- ENVIRO CONSTRAINTS**
- ESAs**
- Cat B ESA
 - Cat B ESA 300m Buffer
 - Cat C ESA
 - Cat C ESA 200m Buffer
 - Cat C ESA Habitat
 - Constraints Protocol (outside Cat B/Cat C ESA & Buffer)
- FLOODING 100y MAX DEPTH**
- 8
 - 0
- SLOPE %**
- <= 7
 - > 7

Reference Map



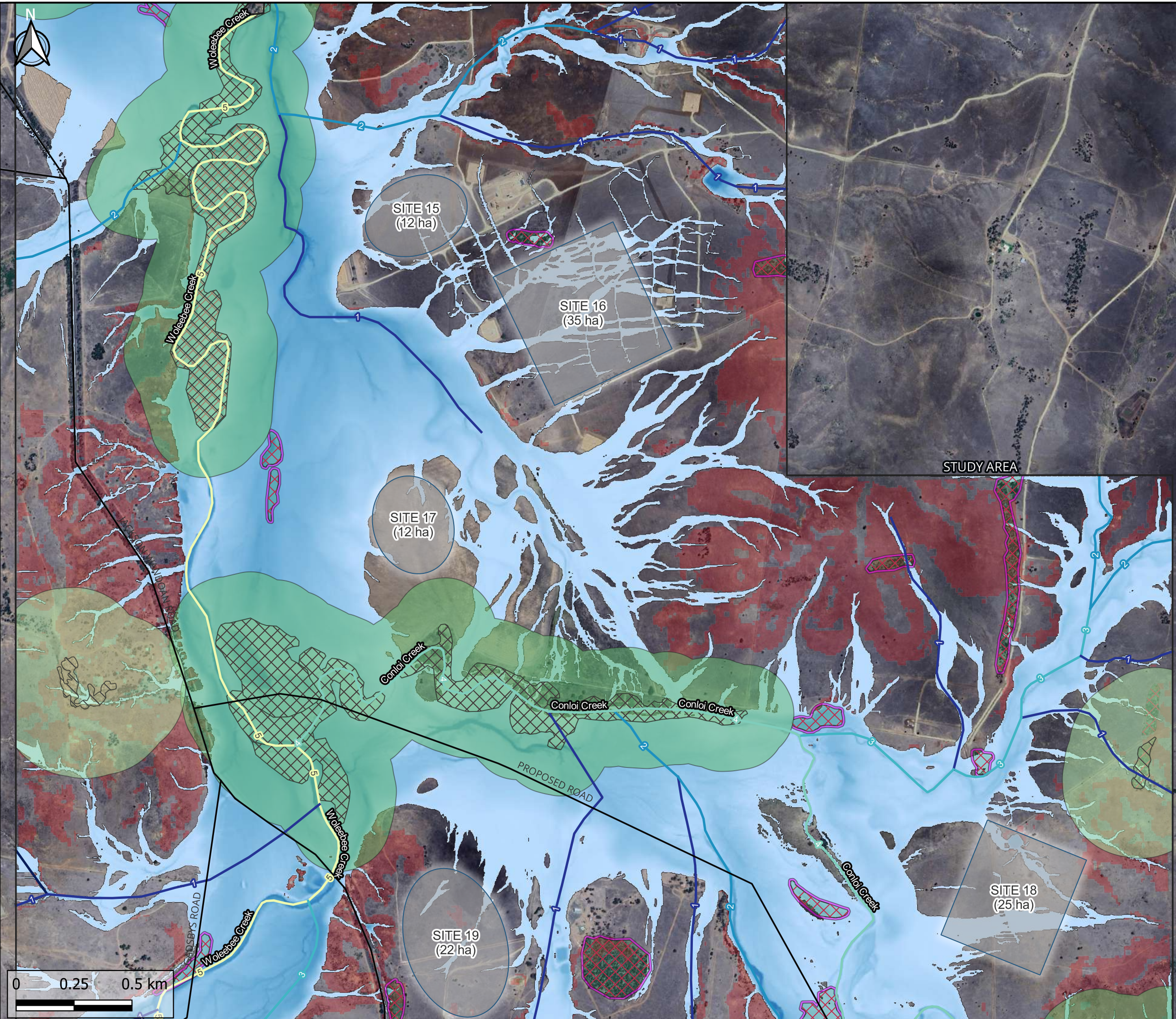
1:250,000
GDA2020 / MGA zone 55

PAGE SIZE A3



PROJECT LOUISIANA DAM SITING
 FIGURE QC1051_006-SKE-002
 PROJECT NO. QC1051_006
 DATE 14-03-2024
 AUTHOR aleotta

Disclaimer: While all reasonable care has been taken to ensure the information contained on this map is up to date and accurate, this map contains data from a number of sources - no warranty is given that the information contained on this is free from error or omission. Any reliance placed on such information shall be at the sole risk of the user. Please verify the accuracy of all information prior to using it. This map is not a design document.



LEGEND

FEATURES

- POTENTIAL DAM SITES
- STUDY AREA
- PL 209
- ROADS AND TRACKS

WATERCOURSES

STREAM ORDERS

- 1
- 2
- 3
- 4
- 5

ENVIRO CONSTRAINTS

ESAs

- Cat B ESA
- Cat B ESA 300m Buffer
- Cat C ESA
- Cat C ESA 200m Buffer
- Cat C ESA Habitat
- Constraints Protocol (outside Cat B/Cat C ESA & Buffer)

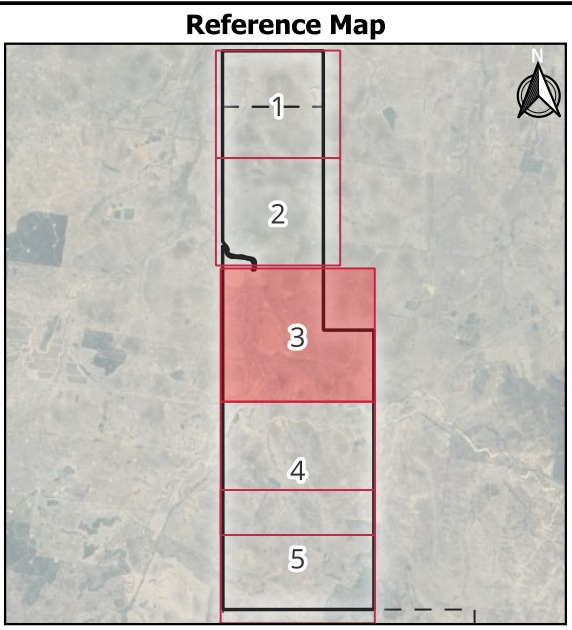
FLOODING 100y MAX DEPTH

- 8
- 0

SLOPE %

- <= 7
- > 7

STUDY AREA



1:250,000
GDA2020 / MGA zone 55

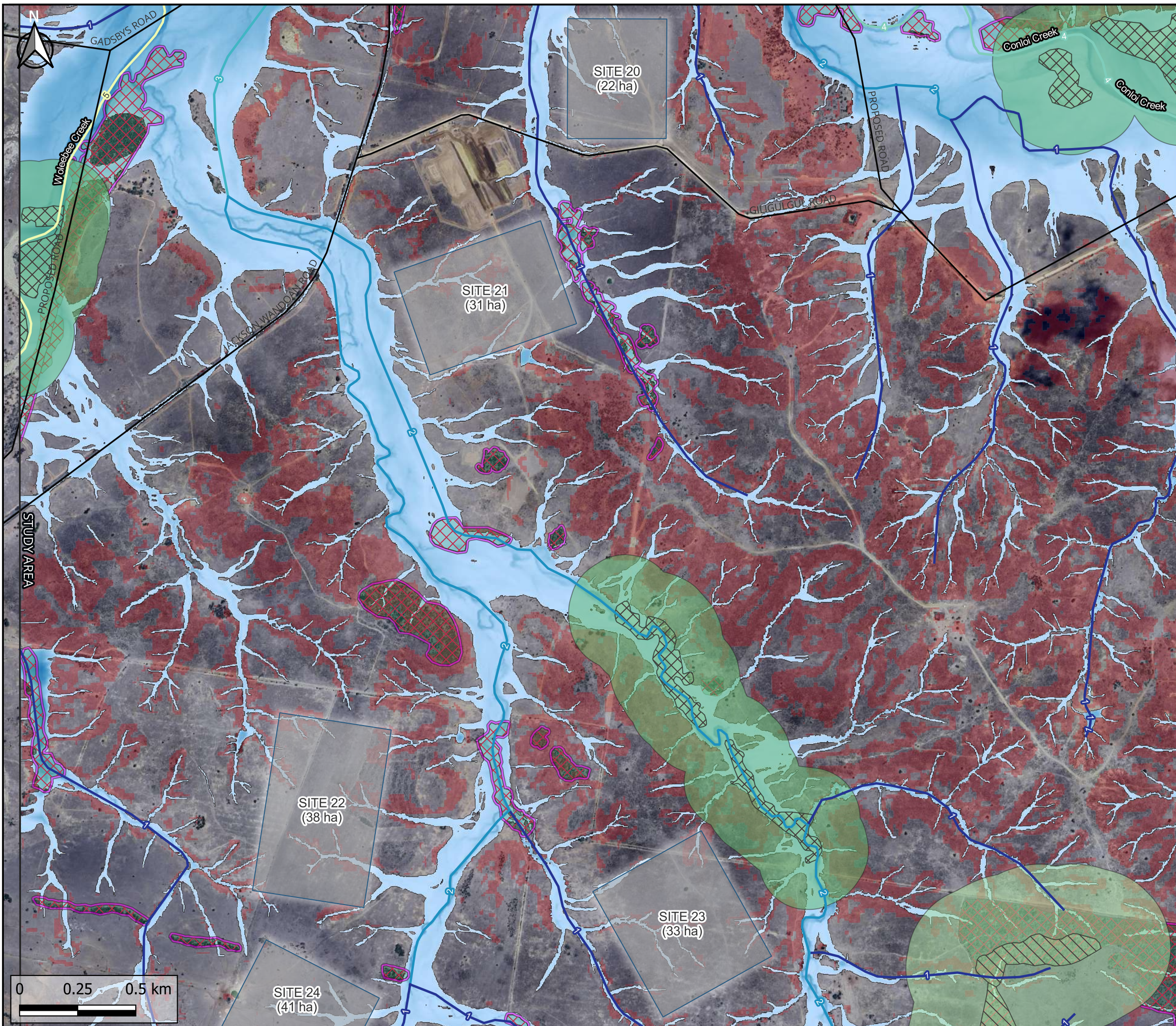


PAGE SIZE A3

ENGEMY
© Engeny Australia Pty Ltd 2024. All Rights Reserved

PROJECT LOUISIANA DAM SITING
FIGURE QC1051_006-SKE-003
PROJECT NO. QC1051_006
DATE 14-03-2024
AUTHOR aleotta

Disclaimer: While all reasonable care has been taken to ensure the information contained on this map is up to date and accurate, this map contains data from a number of sources - no warranty is given that the information contained on this is free from error or omission. Any reliance placed on such information shall be at the sole risk of the user. Please verify the accuracy of all information prior to using it. This map is not a design document.



LEGEND

FEATURES

- POTENTIAL DAM SITES
- STUDY AREA
- PL 209
- ROADS AND TRACKS

WATERCOURSES

STREAM ORDERS

- 1
- 2
- 3
- 4
- 5

ENVIRO CONSTRAINTS

ESAs

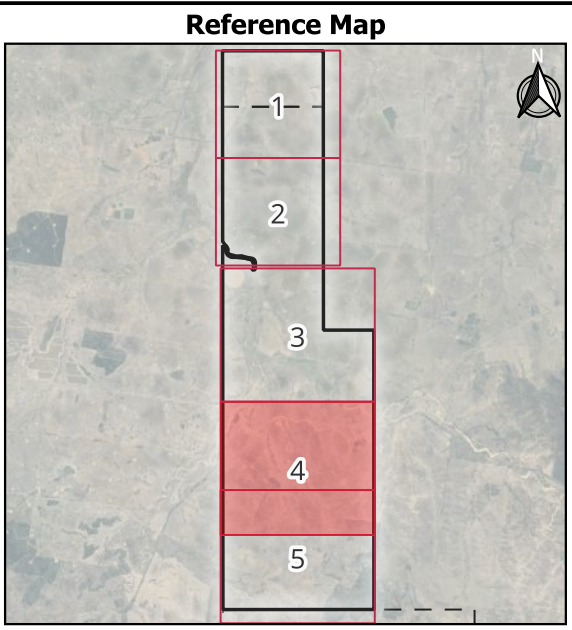
- Cat B ESA
- Cat B ESA 300m Buffer
- Cat C ESA
- Cat C ESA 200m Buffer
- Cat C ESA Habitat
- Constraints Protocol (outside Cat B/Cat C ESA & Buffer)

FLOODING 100y MAX DEPTH

- 8
- 0

SLOPE %

- <= 7
- > 7



1:250,000
GDA2020 / MGA zone 55

PAGE SIZE A3

ENGENY
© Engeny Australia Pty Ltd 2024. All Rights Reserved

PROJECT LOUISIANA DAM SITING
FIGURE QC1051_006-SKE-004
PROJECT NO. QC1051_006
DATE 14-03-2024
AUTHOR aleotta

Disclaimer: While all reasonable care has been taken to ensure the information contained on this map is up to date and accurate, this map contains data from a number of sources - no warranty is given that the information contained on this is free from error or omission. Any reliance placed on such information shall be at the sole risk of the user. Please verify the accuracy of all information prior to using it. This map is not a design document.



SITE 24
(41 ha)

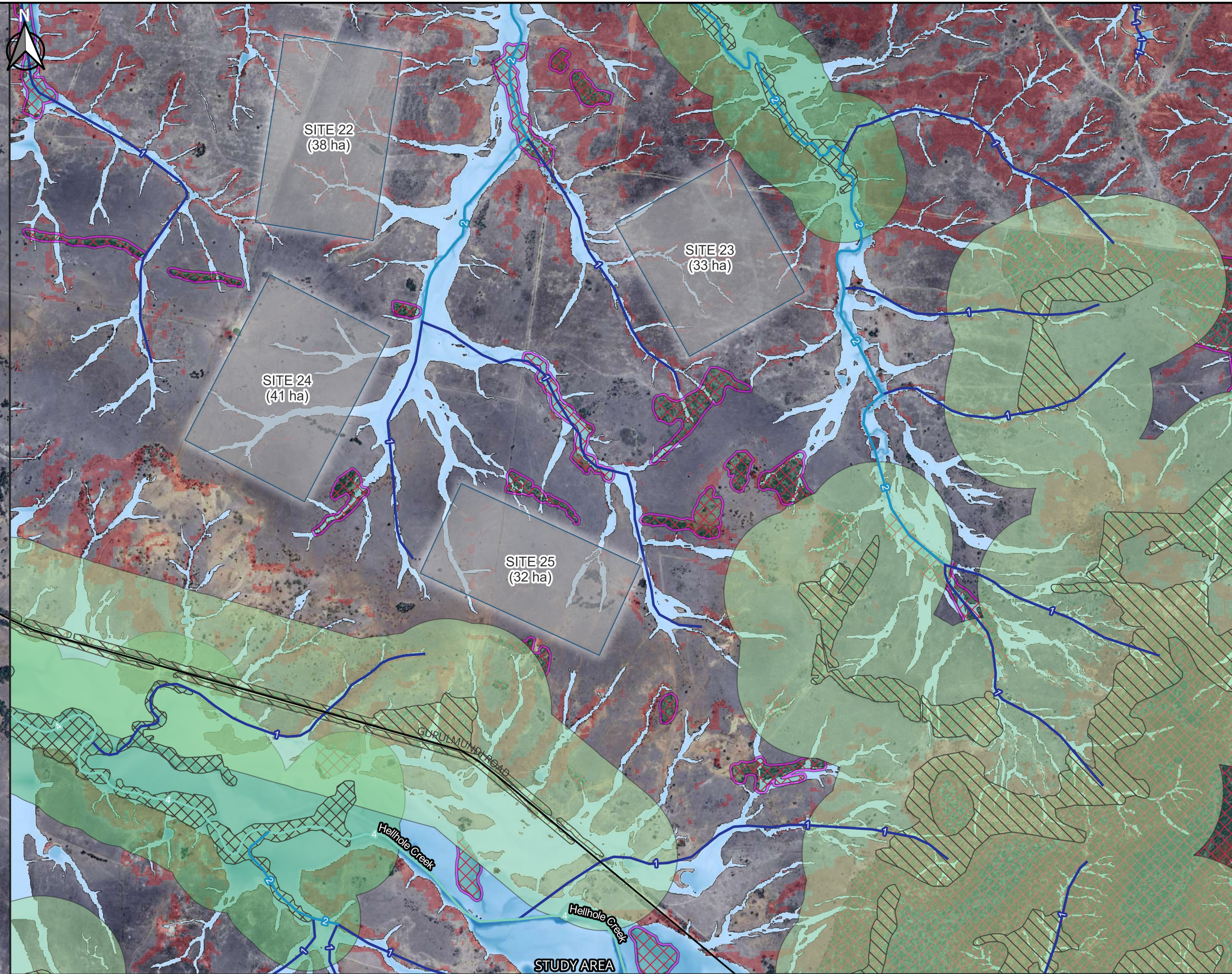
SITE 23
(33 ha)

SITE 22
(38 ha)

SITE 21
(31 ha)

SITE 20
(22 ha)

STUDY AREA



LEGEND

FEATURES

- POTENTIAL DAM SITES
- STUDY AREA
- PL 209
- ROADS AND TRACKS

WATERCOURSES

STREAM ORDERS

- 1
- 2
- 4

ENVIRO CONSTRAINTS

ESAs

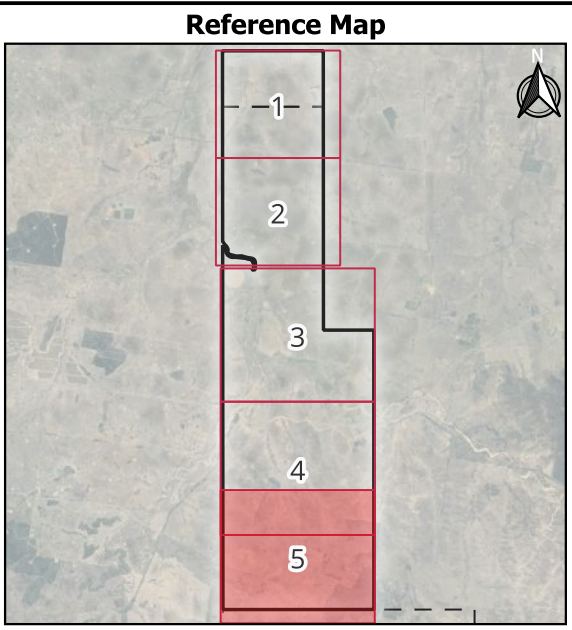
- Cat B ESA
- Cat B ESA 300m Buffer
- Cat C ESA
- Cat C ESA 200m Buffer
- Cat C ESA Habitat
- Constraints Protocol (outside Cat B/Cat C ESA & Buffer)

FLOODING 100y MAX DEPTH

- 8
- 0

SLOPE %

- <= 7
- > 7

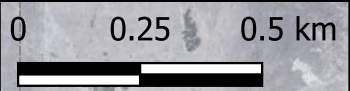


1:250,000
GDA2020 / MGA zone 55

PAGE SIZE A3



PROJECT LOUISIANA DAM SITING
 FIGURE QC1051_006-SKE-005
 PROJECT NO. QC1051_006
 DATE 14-03-2024
 AUTHOR aleotta



Disclaimer: While all reasonable care has been taken to ensure the information contained on this map is up to date and accurate, this map contains data from a number of sources - no warranty is given that the information contained on this is free from error or omission. Any reliance placed on such information shall be at the sole risk of the user. Please verify the accuracy of all information prior to using it. This map is not a design document.